



# WHO ATE MY COOKIE?

## Identifying the Common Urban Ants of North Carolina

START HERE

Number of petioles

1



Petiole prominent and taller than wide?



Yes

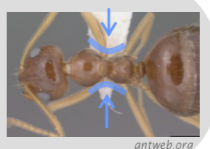
Asian Needle Ant  
*Brachyponera chinensis*



No

Is the back constricted in the middle like an hourglass?

Yes



Winter Ant  
*Prenolepis imparis*



No



Does its rear end have an acidopore (a circular opening surrounded by a fringe of hairs)?

No



Does the petiole have a standing node?

Yes



Forelius Ant  
*Forelius pruinosus*



Triangular



Are the last few segments of the antenna slightly larger, forming a clubbed end?

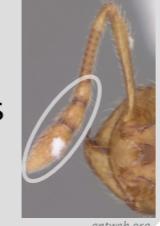
No



Winnow Ants  
*Aphaenogaster* (3 common species)



Yes



Big Headed Ants  
*Pheidole* (3 common species)



Is the petiole square or triangular?

Square

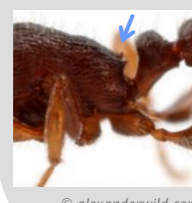


Pavement Ant  
*Tetramorium caespitum*

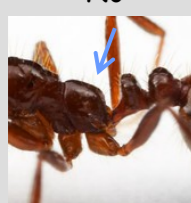


Does its back have spines?

Yes



No



Size and Color?

Yellow and tiny (0.5 to 3mm)

Thief Ant  
*Solenopsis molesta*



Black and tiny (~1.5mm)

Little Black Ant  
*Monomorium minimum*



Reddish-brown and small (3-6mm)

Imported Red Fire Ant  
*Solenopsis invicta*



No. Petiole reduced to a flattened strip.



Odorous House Ant  
*Tapinoma sessile*



Yes. Petiole with a standing node.



Argentine Ant  
*Linepithema humile*

